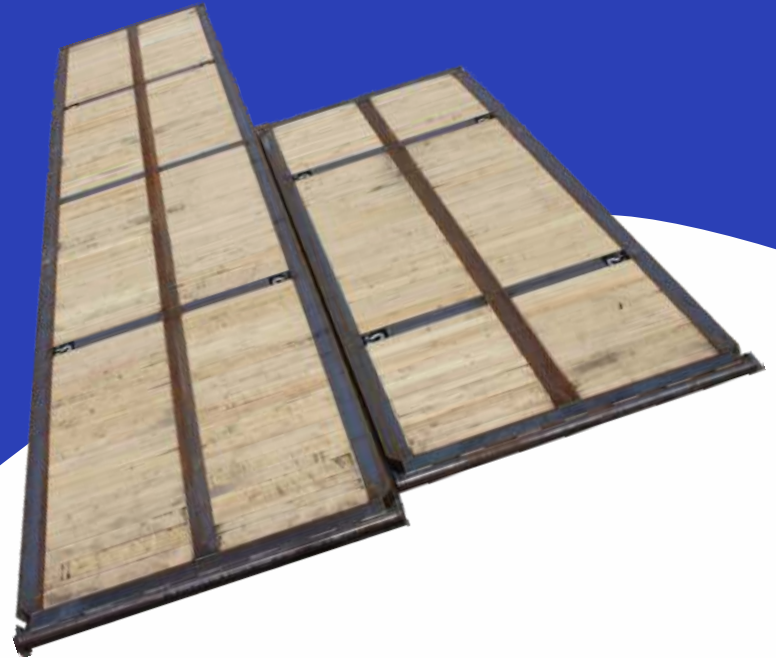


ACRE RIG MATS & OILFIELD PRODUCTS INC.



ACRE RIG MATS & OILFIELD PRODUCTS INC.

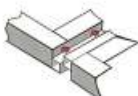
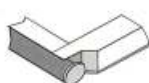
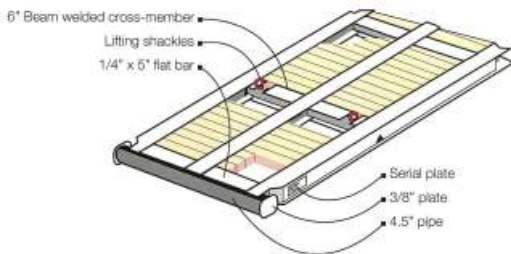
6222-41 Street
Leduc, AB T9E 0V7
780.986.0267

David Stasiewich
President/Owner

david@acrerigmats.com www.acrerigmats.com



Standard Rig Mat Construction details





Interlocking Mats



Matting Options

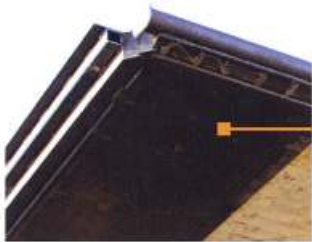
- Custom width & lengths
- Pressure Treated or White Lumber
- Interlocking Mats
- Jack Pads
- Rat & Mouseholes
- Pipe Ends or Square Ends
- Shackles & Keyholes
- Camp Mats
- Steel Plate Overlay
- Safety Traction

Double Wide Containment Mats

- Overlay plate to cover joint between mats for 100% coverage
- Reinforced grates will stand up to almost any load
- 14' x 42' Custom widths & lengths can be built



Custom
Mats



Sealed Pan

Service Rig Containment Mat

- 4 to 6 barrel sump
- Sloped sides
- Rigid ramp
- Checker-plate deck
- 8' - 10' - 12' widths
- up to 60' lengths





Access Mats

Available in



OAK



FIR



HYBRID

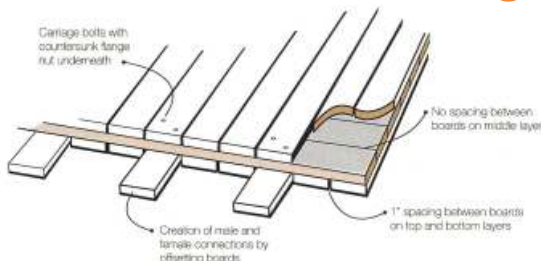
Combination Oak and Fir

Strong & Durable

Hold True
Bolt Pattern



Solid Core Design



Tanks

Shale Bins



Tanks

Floc Tanks



Mix Bins

Can build to customer specifications

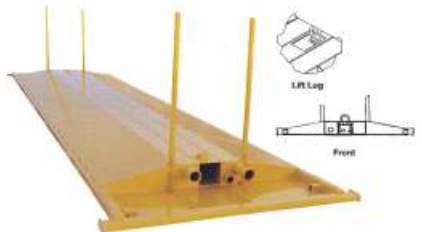


Custom Builds



We also build:

- Flare Tubs
- Premix Tanks
- Pipe Tubs
- Pipe Racks
- Line Crossings



Variety of standard sizes or built-to-order

Standard Features: • Maximum Strength • Best Stability • Low Maintenance • Easily Repaired

